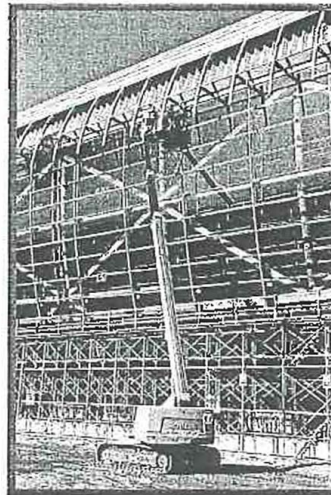
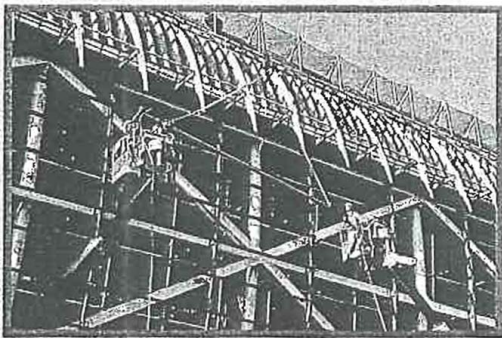


# SR-210 SR-182

SR-210/SR-182 crawler type  
self-propelled aerial platform

## Features

SR-210 ensure safe, efficient erection of external wall construction, and other operations without preparation of the ground at factories, warehouses, and other work sites, thereby rationalizing the construction work.



## COTAC FINLAND

MICHI

## SR210

- \* Max. height above ground :  
20.8m (68ft 3in)
- \* Maximum load capacity :  
200kgf (440lbs)



(1) The compact body offers wide operational range. The full boom permits continuous operation over a wide area without moving the basic unit, and the crawler track base gives excellent gradeability on uneven ground, allowing efficient operations for any type of work.

(2) Since the basket speed is kept constant, the boom raising, slewing, pivot turn, and spin turn operations can be conducted safely (SR-210).  
Body tilt alarm unit: When the machine inclines more than three degrees on a slope, the alarm is activated to give warning to operators.

(3) The basket rotates 90 degrees to the left and right for easy access to the back of steel frames and to avoid obstacles.

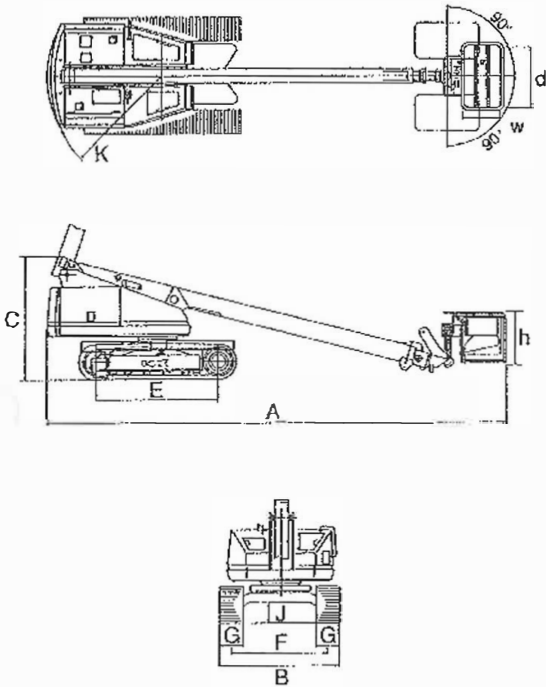
(4) Smooth operation by electro-magnetic proportional control  
The speed of boom raising, telescopic motion, and travelling can be controlled by adjusting the lever. Easy lever operation permits safe operation even in the vicinity of obstacles.

# SR-210

COTAC FINLAND



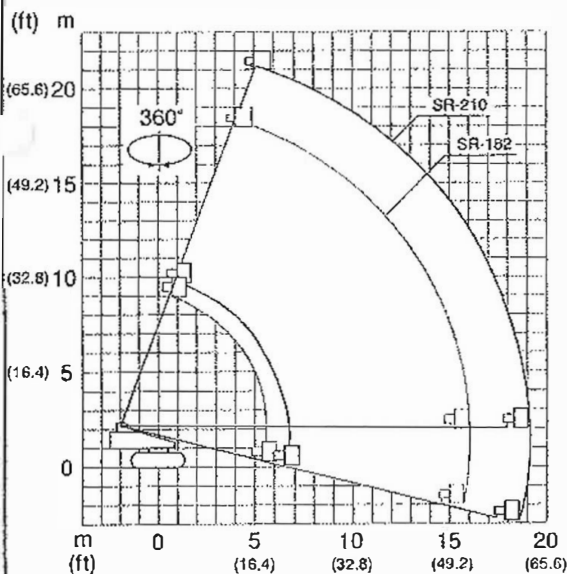
## SR-210



### <Major specifications for SR-210

|                                       |   |                                    |
|---------------------------------------|---|------------------------------------|
| ●Model/name                           |   |                                    |
| Model                                 | SR-210                                      |                                    |
| Name                                  | Crawler type self-propelled aerial platform |                                    |
| ●Platform                             |   |                                    |
| Max load capacity                     | 200kgf (440lbs)                             | 250kgf (550lbs)                    |
| Max platform height                   | 20.8m (68ft 3in)                            | 18.0m (59ft)                       |
| Max horizontal outreach               | 19.0m (62ft 4in)                            | 16.5m (54ft 1in)                   |
| Platform inner size                   | (d×w×h):1.3×0.75×1.1m (51.2×29.5×43.3in)    |                                    |
| Platform rotator                      | 180 degrees hydraulic                       |                                    |
| ●Boom                                 |   |                                    |
| Boom length                           | 8.28~19.96m<br>(27ft 2in ~ 65ft 6in)        | 7.19~16.86m<br>(23ft 7in~55ft 4in) |
| ●Slewing device                       |   |                                    |
| Slewing angle                         | 360 degrees continuous                      |                                    |
| Slewing speed                         | 0.8rpm                                      | 0.86rpm                            |
| ●Travelling                           |   |                                    |
| Travelling speed                      | 0-0.9km/hr(0.55MPH)                         | 0-1.1km/hr(0.68MPH)                |
| Gradeability stowed                   | 22° (40%)                                   | 27° (51%)                          |
| ●Vehicle dimensions                   |   |                                    |
| A: Length                             | 9,745mm (32ft)                              | 8,610mm (28ft 3in)                 |
| B: Width                              | 2,460mm (8ft 1in)                           |                                    |
| C: Height                             | 2,550mm (8ft 4in)                           |                                    |
| Gross vehicle weight                  | 15,300kgf (33,660lbs)                       | 13,500kgf (29,700lbs)              |
| J: Ground clearance                   | 425mm (16.7in)                              |                                    |
| E: Tumbler center distance            | 2,575mm (8ft 5in)                           |                                    |
| F: Crawler center distance            | 1,960mm (6ft 5in)                           |                                    |
| K: Radius of revolving superstructure | 2,440mm (8ft)                               | 2,420mm (7ft 11in)                 |
| G: Crawler shoe width                 | 500mm (19.7in)                              |                                    |
| Max. ground pressure                  | 0.91kgf/cm <sup>2</sup> (13psi)             | 0.78kgf/cm <sup>2</sup> (11psi)    |
| ●Power source                         |   |                                    |
| Name and type                         | ISUZU 4BD1T(turbo)                          | ISUZU 4BD1                         |
| Max. output                           | 81PS(60.4kw)/1,750rpm                       | 69.5PS(51.8kw)/2,200rpm            |
| Displacement                          | 3,856cc                                     |                                    |
| voltage                               | 24V DC                                      |                                    |
| Fuel tank capacity                    | 230ℓ (60.7gal)                              |                                    |
| ●Hydraulics                           |   |                                    |
| Pressure                              | 210 kgf/cm <sup>2</sup> (2980 psi)          |                                    |
| Reservoir capacity                    | 250ℓ (66 gal)                               |                                    |

### Operating range



#### Notes:

1. The deflection of the boom is not taken into consideration in the chart.
2. The operating range is the same in any direction.
3. The chart shown above is based on supposition that the ground is horizontal and hard and that the wind velocity is less than 16 m/sec.

\* These specifications and appearance/construction are subject to change for improvement without notice.  
Distributors